

Hand-Hydraulic Table Truck

150KG/300KG/500KG/1000KG Capacity

TF15/TF30/TF50/TF50A/TF100

Assembly & Operation Instructions

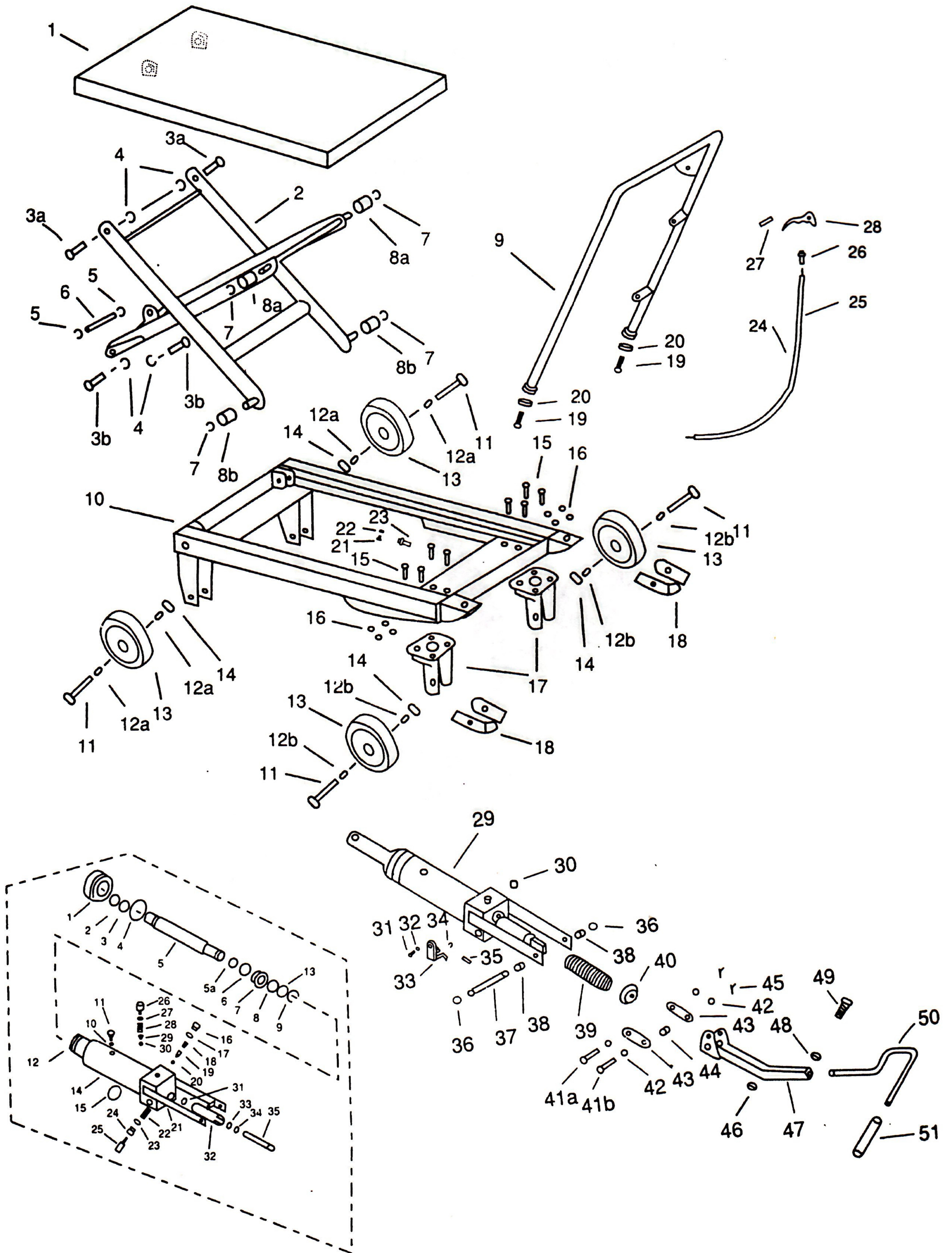


Note: Owner and Operator MUST read and understand this operating instructions before use this table truck!



扫描全能王 创建

HAND-HYDRAULIC TABLE TRUCK



HAND-HYDRAULIC TABLE TRUCK PARTS

NO.	Description	Q'ty	NO.	Description	Q'ty
1	Table	1	43	Slide Lever	2
2	Link Assembly	1	44	Bushing	1
3a	Link Shaft	2	45	Split Pin	2
3b	Link Shaft	2	46	Rubber Bumper	1
4	C-Clip	4	47	Lift Lever	1
5	C-Clip	2	48	Spring Lock Washer	1
6	Cylinder Shaft	1	49	Bolt	1
7	C-Clip	4	50	Foot Lever	1
8a	Roller Guide	2	51	Foot Lever Pad	1
8b	Roller Guide	2			
9	Handle	1	(1)	Top Nut	1
10	Frame	1	(2)	Dust-Ring	1
11	Long Bolt	4	(3)	O-Ring	1
12a	Wheel Bushing	4	(4)	Oil Seal	1
12b	Wheel Bushing	4	(5)	Piston Rod	1
13	Wheel	4	(5a)	O-Ring	1
14	Nut	4	(6)	O-Ring	1
15	Bolt	8	(7)	Piston Bushing	1
16	Nut	8	(8)	Y-Ring	1
17	Wheel Holder	2	(9)	C-Clip	1
18	Stop Support	2	(10)	O-Ring	1
19	Bolt	2	(11)	Air Breather	1
20	Flat Washer	2	(12)	Inner Oil Cylinder	1
21	Lock Thread Bolt	1	(13)	Oil Seal	1
22	Lock Thread Nut	1	(14)	Outer Oil Cylinder	1
23	Set Screw	1	(15)	Oil Seal	1
24	Thread	1	(16)	Hermetic Nut	1
25	Thread Cover	1	(17)	O-Ring	1
26	Set Screw	1	(18)	Tower Spring	1
27	Spring Pin	1	(19)	Valve	1
28	Control Handle	1	(20)	Steel Ball	1
29	Cylinder Assembly	1	(21)	Cylinder Assembly	1
30	Screw Cover	1	(22)	Spring	1
31	Bolt	1	(23)	O-Ring	1
32	Nut	1	(24)	Hermetic Copper Nut	1
33	Shove Pin Seat	1	(25)	Shove Pin	1
34	C-Clip	1	(26)	Relief Plug	1
35	Lock Pin	1	(27)	O-Ring	2
36	C-Clip	2	(28)	Relief Spring	1
37	Cylinder Lock Pin	1	(29)	Spring Cover	1
38	Bushing	2	(30)	Steel Ball	1
39	Spring	1	(31)	Copper Seal	1
40	Spring Cover	1	(32)	Pump Cylinder	1
41a	Lock Pin	1	(33)	Y-Ring	1
41b	Lock Pin	1	(34)	Dust-Ring	1
42	Washer	4	(35)	Pump Piston	1



SPECIFICATIONS

Model	TF15	TF30/TF50	TF50A	TF100*
Capacity:	150KG	300 KG / 500 KG	500 KG	1000 KG
Maximum Height:	740 MM	900 MM	900 MM	1000 MM
Minimum Height	225 MM	285 MM	285 MM	380 MM
Table Dimension:	740x450x35 MM	815x500x50 MM	900x600x50 MM	1016x515x60 MM
Packing Size	820x480x265 MM	960x530x350	940x630x420 MM	1190X600X430
Weight:	60 KG	76KG / 84 KG	93 KG	115 KG
Construction	Overall Steel Construction			
Wheels	Hard Rubber with Ball Bearings.			

Remark: (1), With "*" is to mean that the table lowering can be controlled by other screw type.
(3), 350kg, 750kg and 1000kg hand-hydraulic table truck can be options with double-scissors
(2), Specifications will be changed without prior notice.

WARNING

1. Read and understand the instruction manual.
2. Do not load hydraulic table cart beyond its rated capacity.
3. Do not allow people to sit or ride on the hydraulic table cart.
4. Secure load before raising or lowering hydraulic table cart.
5. Do not transport loads with hydraulic table cart in a raised position.
6. Use only on smooth surfaces.
7. Keep hands and feet clear when raising or lowering lift.
8. Open release valve knob slowly to allow load to descend in a controlled manner.
9. Failure to comply with the instructions and warnings in this manual may result in personal injury or property damage.
10. Be sure to wear ANSI approved safety gloves when using tools or equipment.

The Warnings ,Cautions ,and Instructions discussed in this instruction manual cannot cover all possible conditions and situations that may occur. It must be understood by the operator that common sense and caution are factors which cannot be built into this product, but must be supplied by the operator.

ASSEMBLY

Refer to the Parts Diagram and Parts List on this booklet.

1. Attach the handle(9) to the frame(10) with two flat washers(20) and two bolts(19).
2. Attach the foot lever(50) to the lift lever(47) with bolt(49)and lock washer(48).

OPERATION

1. Close the valve knob by unclenching the control handle until it stops.
2. Table is raised by activating the foot pedal.
3. To lower the table, slowly draw the control handle.
4. Before loading, and while stationary, lock the caster brake.

MAINTENANCE

1. Lubricate each friction point monthly with a good quality grease.
2. Check the free movement and wear of wheels. Replace if needed.
3. Check caster brake function. It should lock firmly and release completely.
4. Check for oil leakage from hydraulic cylinder. *The hydraulic cylinder is not user serviceable.*



OPERATION FIG.

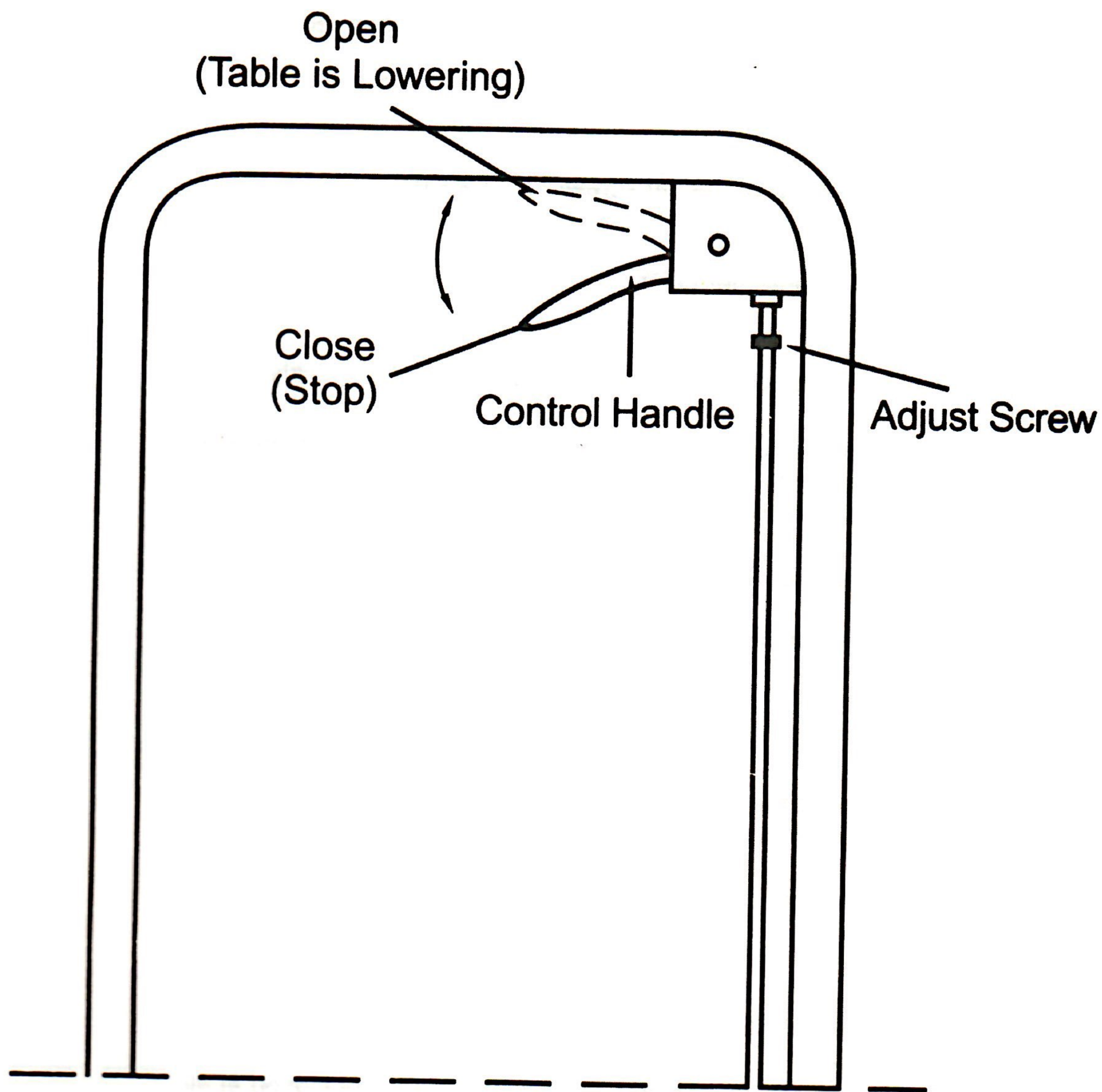


FIG.

PLEASE READ THE FOLLOWING CAREFULLY

The manufacture and/or distributor has provided the parts diagram in this manual as reference tool only. Neither the manufacture nor distributor makes any representation or warranty of any kind to the buyer that he or she is qualified to make any repairs to the product or that he or she is qualified to replace any parts of the product. In fact, the manufacture and/or distributor expressly states that all repairs and parts replacement should be undertaken by certified and licensed technicians and not by the buyer. The buyer assumes all risk and liability arising out of his or her repairs to the original product or replacement parts thereto. Or arising out his or her installation of replacement parts thereto.



TROUBLE SHOOTING

**(NOTE: DO NOT ATTEMPT TO REPAIR THE TABLE TRUCK
UNLESS YOU ARE TRAINED AND AUTHORIZED TO DO SO.)**

Trouble 1.

The table can not be lifted up ,while activate the foot pedal.

Clause

- The set screw is not in correct position ,the pump valve is opened.
- The hydraulic oil has impurities.
- The hydraulic oil is not enough.
- Air come into the hydraulic oil.

Fixing Methods

- Adjust the set screw(26) up or the set screw(23) forward.
- Change the oil.
- Fill the oil.
- Banish the air(pump air breather (11)).

Trouble 2.

The table can not be lowered quickly ,while release the valve quickly.

Clause

- The set screw is not in correct position ,the pump valve is not opened at all.
- The hydraulic oil has impurities.
- Air come into the hydraulic oil.

Fixing Methods

- Adjust the set screw(26) down or the set screw(23) backward.
- Change the oil.
- Banish the air(pump air breather (11)).

Trouble 3.

Leaks

Clause

- Sealing parts worn or damaged.
- Some parts cracked or worn into small.

Fixing Methods

- Replace with the new one.
- Replace with the new one.

Trouble 4.

The table descends without the release valve works.

Clause

- The set screw is not in correct position ,the pump valve is not closed at all.
- The impurities in the oil cause the valve to be unable to close tight.
- Air come into the hydraulic oil.
- Some parts of hydraulic system is cracked or bored.
- Sealing parts worn or damaged.

Fixing Methods

- Adjust the set screw(26) up or the set screw(23) forward.
- Change the oil.
- Banish the air(pump air breather (11))
- Inspect and replace the waste parts with the new one.
- Replace with the new one.

Trouble 5.

The table can not be lowered.

Clause

- The piston rod(pump (5)) or link assembly(2) is deformed resulting from partial loading slanting to one side or overloading.
- The table was kept in the high position for long time with piston rod bared to arise in rusting and jamming of the rod.
- The hydraulic system was jammed

Fixing Methods

- Replace the piston rod(pump (5)) or link assembly(2).
- Keeping the table in the lowest position if not using.
- Inspect the hydraulic system and lobby or replace the relative part.

Trouble 6.

The table truck can not lift rate weight.

Clause

- Relief spring(pump(28)) is invalid for a good while.

Fixing Methods

- Twist relief spring(pump(26)) clockwise a little.

